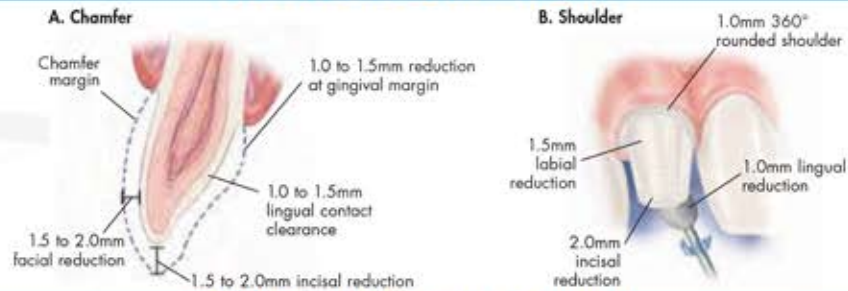
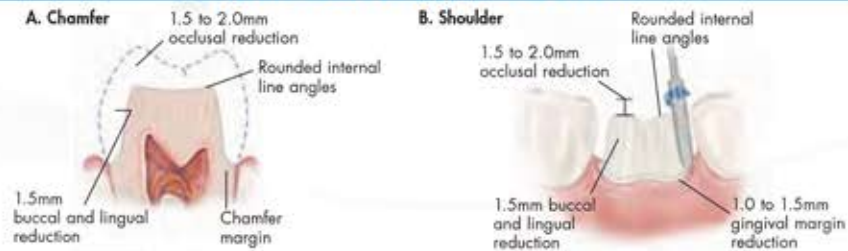


Prep Guide for Metal-Free Restorations

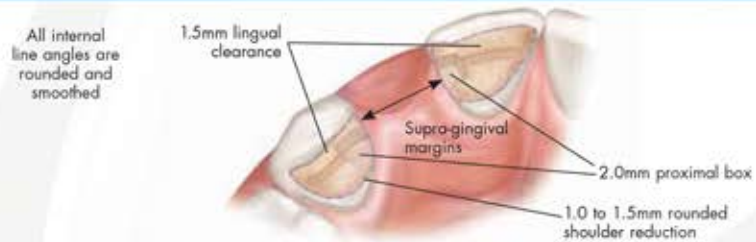
ANTERIOR FULL-COVERAGE CROWN



POSTERIOR FULL-COVERAGE CROWN



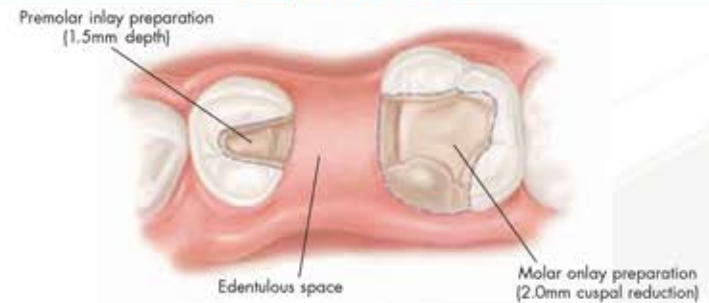
ANTERIOR BRIDGE



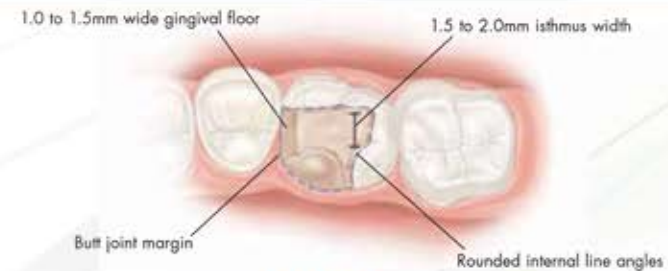
INLAY (PREMOLARS)



INLAY/ONLAY BRIDGE



ONLAY (MOLARS)



VENEERS

Uniform Facial Preparation

A medium-grit round-ended diamond is used to join the depth cut grooves to establish a uniform preparation and porcelain thickness of at least 1.0mm.

Lingual Reduction to Increase Length

The diamond is angled to eliminate undercuts and establish a butt joint on the lingual aspect of the preparation. The incisal edge should be rounded to eliminate sharp line angles.

Chamfer Margins

Correct preparation of the chamfer margins interproximally allow the appropriate bulk of porcelain.

A "Slice-Preparation"

This technique enables the ceramist to close the space and avoid unnatural lingual contours.

©2010 Glidewell Laboratories. Some dentistry featured on the opposite side appears courtesy of Anthony Collette, DDS; Thomas Gleghorn, DDS; Nelson Howard, DDS; David Baird, DDS; and David Horsbrook, DDS. All illustrations reprinted with permission from the Montage Media Corporation. Illustrations ©1998 by Montage Media Corporation.